

LEGEND

< 8	< 8 ft	Green Passing	Green	AIS Green CAN
8 - 9	8 - 9 ft	Red Passing	Red	AIS Red NUN
9 - 9.5	9 - 10 ft	Green Crossing	Green CAN	Red NUN
9.5 - 10	10 - 12 ft	Red Crossing	Junction	
10 - 12	River Mile			
12 - 14	Sailing Line			
14 - 16	BSNP Structure			
> 16	Levee			

Buoy

0 312.5 625 937.5 1,250 2,500 Feet

NOTES:
 Horizontal Coordinate System:
 World Geodetic System of 1984 (WGS84), projected to the
 Universal Transverse Mercator (UTM) Zone 15 North.
 Distance units in U.S. Survey Feet

Vertical Datum:
 Soundings are shown in feet and indicated depths
 are referenced to water surface at time of collection.

The information depicted on this map represents the results of a survey
 conducted on the date indicated and can only be considered
 to represent the general condition existing at that time.

The location of navigation aids are based on and provided by
 the U.S. Coast Guard.

Notes

Jefferson City Gage = 7.3 at time of collection 17 November 2020

Gage_L

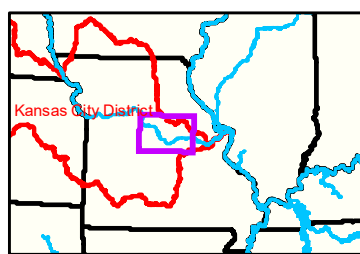
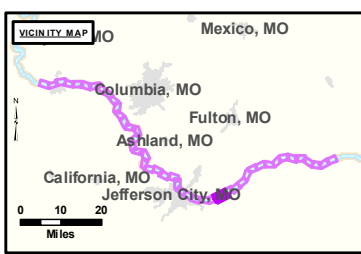
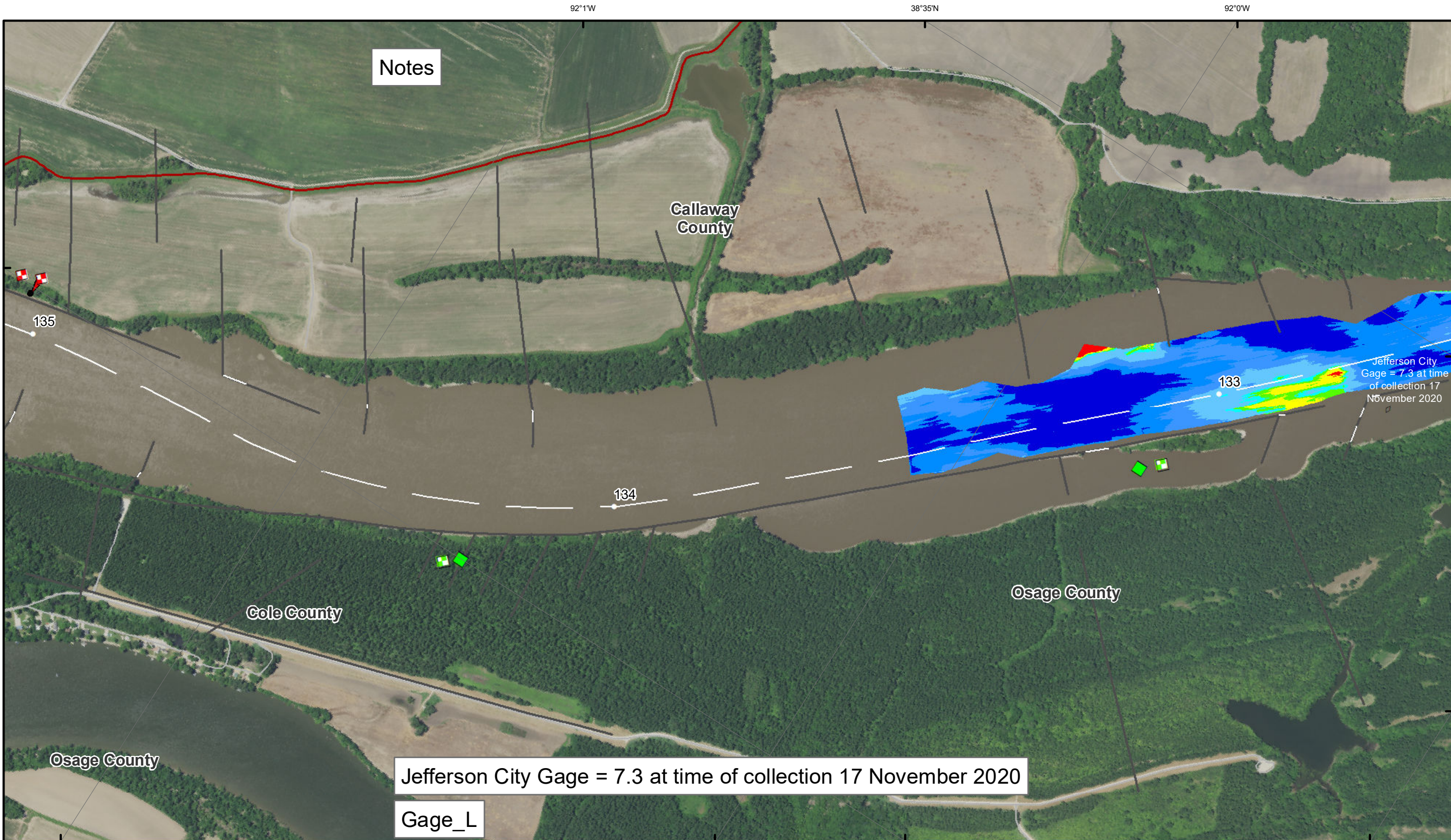


DISCLAIMER: The U.S. Army Corps of Engineers (USACE) provides this information as a service to the public. It is not intended to be used for any purpose other than that for which it was intended. The USACE makes no warranty, express or implied, regarding the accuracy, reliability, or completeness of the information. The USACE is not responsible for any errors or omissions in this information. The USACE is not liable for any damages, including consequential damages, arising from the use of this information. The USACE is not responsible for any actions taken by anyone based on this information. The USACE is not responsible for any actions taken by anyone based on this information.

KANSAS CITY DISTRICT MISSOURI RIVER AREA OFFICE	
Submitted By:	MIRAO
Reviewed By:	MIRAO
Checked By:	MIRAO

Survey Information
 MO_02_LMR
 MO_02_LMR_20201117_CS_132_0_133_5_SORT
 17 November 2020

**Sheet
 Number
 15 of 46**



LEGEND

	< 8		< 8 ft		Green Passing		Green		AIS Green CAN
	8 - 9		8 - 9 ft		Red Passing		Red		AIS Red NUN
	9 - 9.5		9 - 10 ft		Green Crossing		Green CAN		Red NUN
	9.5 - 10		10 - 12 ft		Red Crossing		Junction		
	10 - 12		River Mile						
	12 - 14		Sailing Line						
	14 - 16		BSNP Structure						
	> 16		Levee						

Buoy

	AIS Green CAN
	AIS Red NUN
	Green CAN
	Red NUN

Scale: 0 312.5 625 937.5 1,250 2,500 Feet



NOTES:
 Horizontal Coordinate System:
 World Geodetic System of 1984 (WGS84), projected to the Universal Transverse Mercator (UTM) Zone 15 North. Distance units in U.S. Survey Feet

Vertical Datum:
 Soundings are shown in feet and indicated depths are referenced to water surface at time of collection.

The information depicted on this map represents the results of a survey conducted on the date indicated and can only be considered to represent the general condition existing at that time.

The location of navigation aids are based on and provided by the U.S. Coast Guard.

Notes

Jefferson City Gage = 7.3 at time of collection 17 November 2020

Gage_L

Jefferson City Gage = 7.3 at time of collection 17 November 2020



DISCLAIMER: The U.S. Army Corps of Engineers (USACE) provides this information as a service to the public. It is not intended to be used for any purpose other than that for which it was intended. The USACE makes no warranty, express or implied, regarding the accuracy, reliability, or completeness of the information provided. The USACE is not responsible for any errors or omissions in this information. The USACE is not liable for any damages, including consequential damages, arising from the use of this information. The USACE is not responsible for any actions taken by anyone based on this information. The USACE is not responsible for any actions taken by anyone based on this information.

KANSAS CITY DISTRICT MISSOURI RIVER AREA OFFICE	
Submitted by:	MRAO
Reviewed by:	MRAO
Approved by:	MRAO

Survey Information
 MO_02_LMR
 MO_02_LMR_20201117_CS_132_0_133_5_SORT
 17 November 2020

Sheet Number
 16 of 46